

# Beverages

## SODA

Pepsi, Diet Pepsi, Mt. Dew, Diet Mt. Dew, Sierra Mist, Orange, Root Beer **2.75**  
Add cherry **.50**

**ICED TEA** Freshly Brewed **2.75**

**SWEET TEA** **2.75**

**RASPBERRY ICED TEA** **2.75**

**LEMONADE** **2.75**

# Specialty Drinks

Available hot or iced. Substitute soy or almond milk for **.75**

Flavored syrups: caramel, cherry, vanilla, hazelnut and sugar-free vanilla, available for **.50**

## DOOR COUNTY COFFEE

Locally-roasted, Julie's private blend, bottomless cup. **2.50**

## COLD BREW COFFEE

Served over ice. large **3.75**

## HARNEY & SONS HOT TEA

Assorted flavors. **2.50**

## HOT CHOCOLATE

The best from scratch.  
small **3.25** | large **3.75**

## HOT APPLE CIDER

small **3.25** | large **3.75**

## CHAI TEA LATTE

small **3.75** | large **4.25**

## DEPTH CHARGE

Coffee with a shot of espresso.  
small **3.25** | large **3.75**

## CAPPUCCINO

1/3 espresso, 1/3 steamed milk, 1/3 froth.  
small **3.75** | large **4.25**

## LATTE

1/3 espresso, 2/3 steamed milk topped with froth.  
small **3.75** | large **4.25**

## MOCHA

Latte with chocolate syrup and whipped cream.  
small **4.00** | large **4.50**

## ESPRESSO

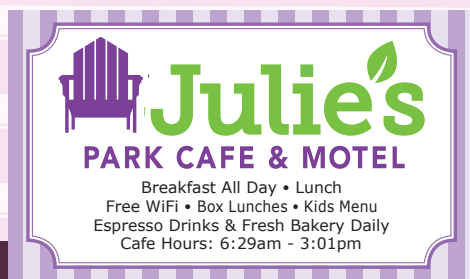
small **2.50** | large **3.00**



# Sweetness

DESSERT, WINE, & COFFEE BAR

# menu



Complimentary Wi-Fi Password: PurpleChair

Hours: 5:30pm - 11:00pm (Closed Tuesdays)

4020 Highway 42, Fish Creek, WI 54212 | (920) 868-2999

[www.sweetnessdoorcounty.com](http://www.sweetnessdoorcounty.com)

# Desserts

## STRAWBERRY CHEESECAKE

With roots going back 2000 years to ancient Greece, cheesecake has a long and noble history that didn't just start in New York. Our version is decadent, creamy, rich, and layered with succulent strawberry sauce. **8.95**

Wine Pairing: Vipra – Sweet Red / Leelanau Cellars – Tall Ship Riesling



## TIRAMISU

Tiramisu is Italian for “cheer me up” and every bite of this indulgent dessert is sure to make you smile. Delicate ladyfinger cookies soaked in rich espresso are layered with silky mascarpone cheese and dusted with dark, delectable cocoa. \*(Gluten Free upon request) **10.00**

Wine Pairing: Moscato – Champagne / Mont Gravet – Rose

## CRÈME BRULEE TRIO

Vanilla Bean, Mocha, and Salted Caramel Praline

France is just one country that claims crème brulee as its own. We're offering three versions of this scrumptious custard dessert topped with a delicate, caramelized sugar crust. Try a tasty trio of flavors including Vanilla Bean, Mocha, and Salted Caramel Praline. \*(Gluten Free) **8.50**

Wine Pairing: Vipra – Sweet Red / Leelanau Cellars – Tall Ship Riesling

## NAPOLEON

A Napoleon is a French classic, also known as gâteau de mille-feuilles or “cake of a thousand sheets”. Our version includes layer after flaky layer of buttery puff pastry cushioning soft, luscious vanilla bean pastry cream. **10.95**

Wine Pairing: Mont Gravet – Rose – Moscato - Champagne

## KEY LIME PIE

The official pie of the state of Florida, Key Lime Pie has become a refreshing American tradition. A satiny-smooth filling, flavored with tart, aromatic, Key West Lime juice, with a crisp graham cracker crust. \*(Gluten Free upon request) **8.95**

Wine Pairing: Hay Maker – Sauvignon Blanc

## BLACK FOREST CAKE

Black Forest Cake is a confection native to the Black Forest region of southwest Germany. We've taken this traditional favorite and created a soft chocolate sponge cake layered with velvety cherry mousse and accompanied by even more cherries, each one deeply infused with port wine. **10.95**

Wine Pairing: CA Donini – Pinot Noir / Sandeman – Port / Lautenbach's Cherry Riesling

## DIY CUPCAKE

What dessert is totally family-friendly, sure to impress a first date, and lets everyone have it just like they want it? A cupcake you can decorate yourself of course! Start with two freshly baked cupcakes and then it's all about YOU, with your choice of fabulous frostings and a variety of delicious toppings. The best part? Decorate it yourself and it's a celebration on a plate! **9.50**



# Cocktails

Made with non distilled liquors

## STRAWBERRY DAIQUIRI

Frozen **7.50**

## MARGARITA

On the Rocks or Frozen **7.25**

## KEY LIME COCKTAIL

**7.75**

## MIMOSAS

Cherry or orange **6.00**

## CHOCOLATE MARTINI

**8.00**

## SCREWDRIVER

**5.50**

## PINA COLADA

Frozen **7.95**

## BLOODY MARY

**6.00**



# Wine

## REDS

### VIPRA

SWEET RED (7%)  
**9.50 GLASS / 31 BOTTLE**

### CA DONINI

PINOT NOIR (12.5%)  
**6.25 GLASS / 20 BOTTLE**

### SANDEMAN

PORT (19.5%)  
**12 GLASS / 42 BOTTLE**

HOUSE PORT  
**8.50 GLASS**

HOUSE RED  
**6 GLASS**

## ROSE & CHAMPAGNE

### MOSCATO

CHAMPAGNE (10%)  
**6.50 GLASS / 21 BOTTLE**

## WHITES

### HAY MAKER

SAUVIGNON BLANC (12.5%)  
**7.95 GLASS / 26 BOTTLE**

### LEELANAU CELLARS

TALL SHIP RIESLING (12.5%)  
**7.25 GLASS / 23 BOTTLE**

### LAUTENBACH'S

CHERRY RIESLING (11%)  
**7.50 GLASS / 24 BOTTLE**

HOUSE WHITE  
**6 GLASS**

### MONT GRAVET

ROSE (12%)  
**7.25 GLASS / 25 BOTTLE**



# Beer

COORS LIGHT **4.00**

FANNY PACK IPA **4.25**

PACKERLAND PILSNER **4.25**

UP NORTH LAGER **4.50**

PALLET JACK IPA **4.25**

COMMUTER KOLSCH **4.50**

SPOTTED COW **4.25**

WHITE CLAW **4.00**  
Black Cherry